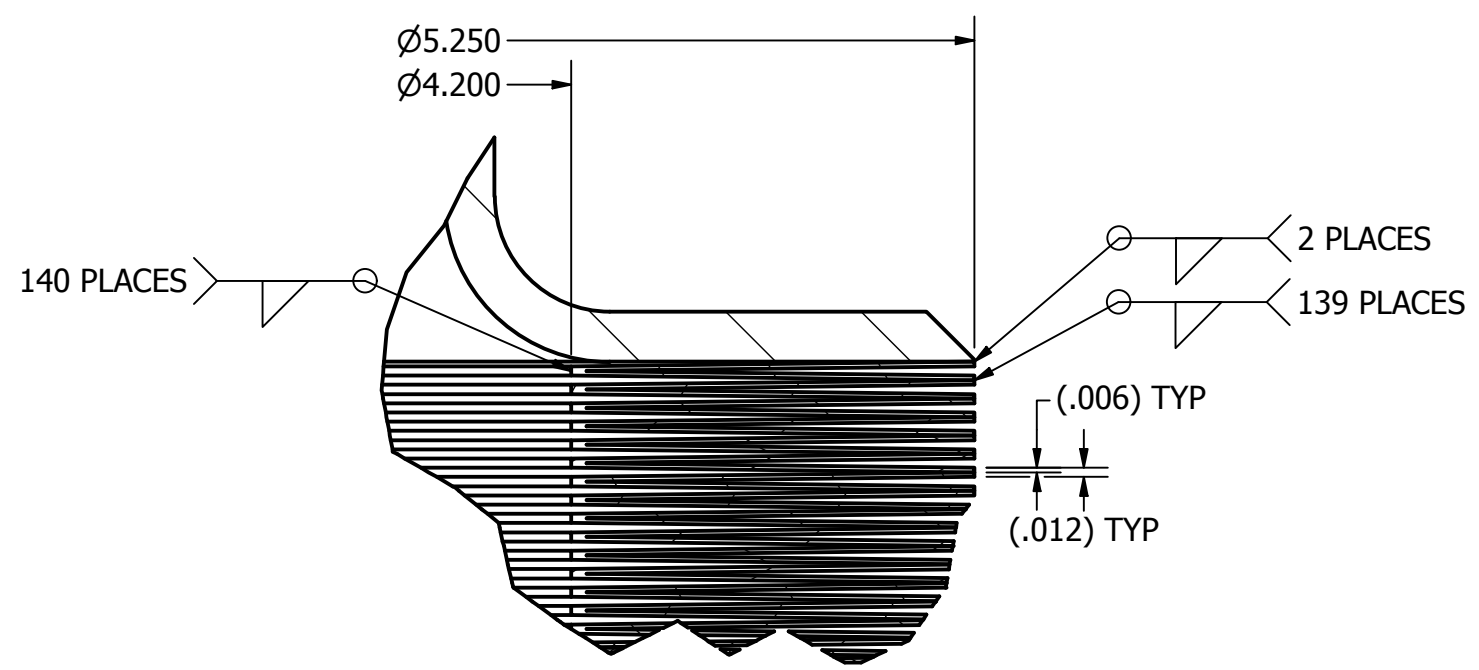
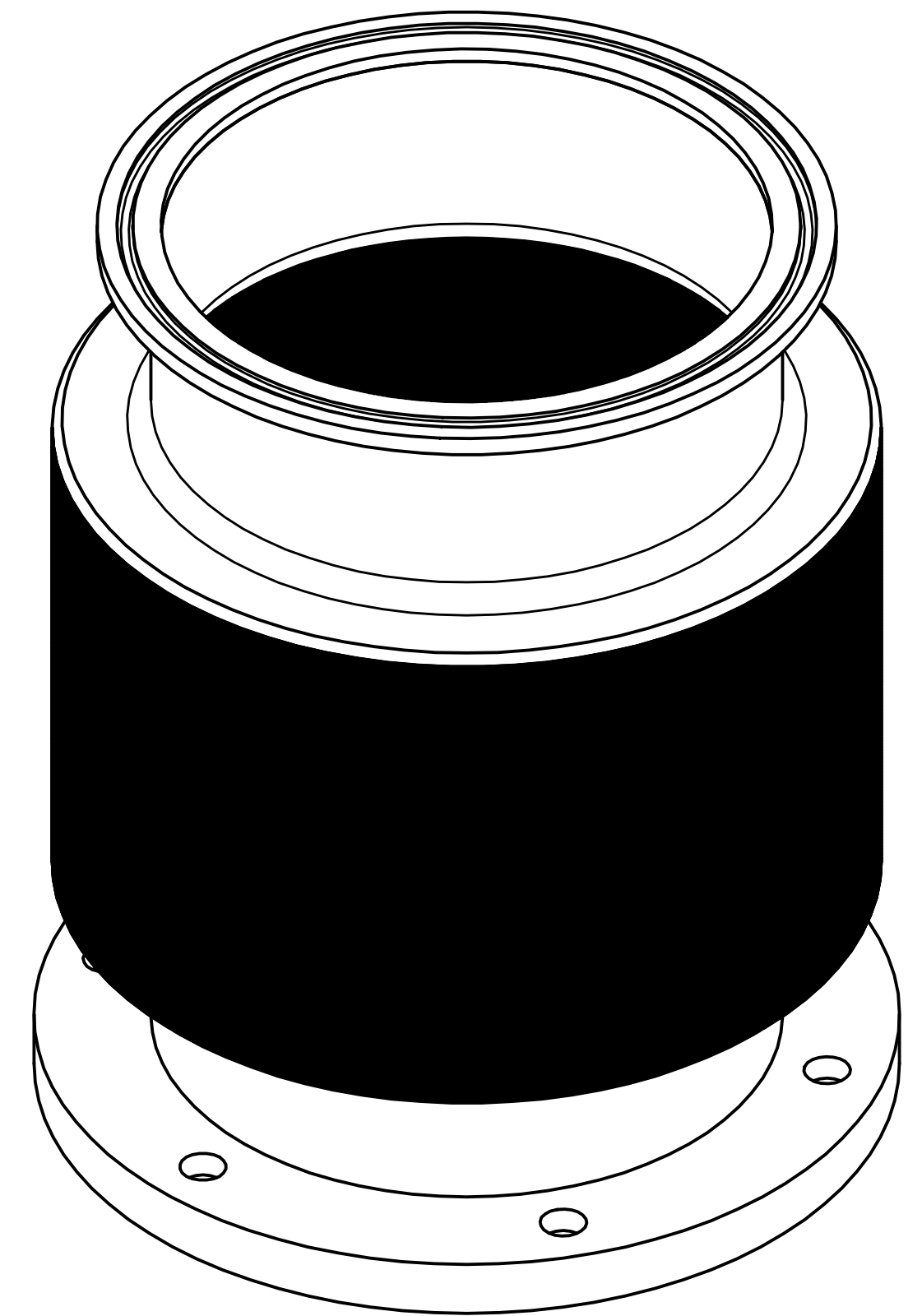
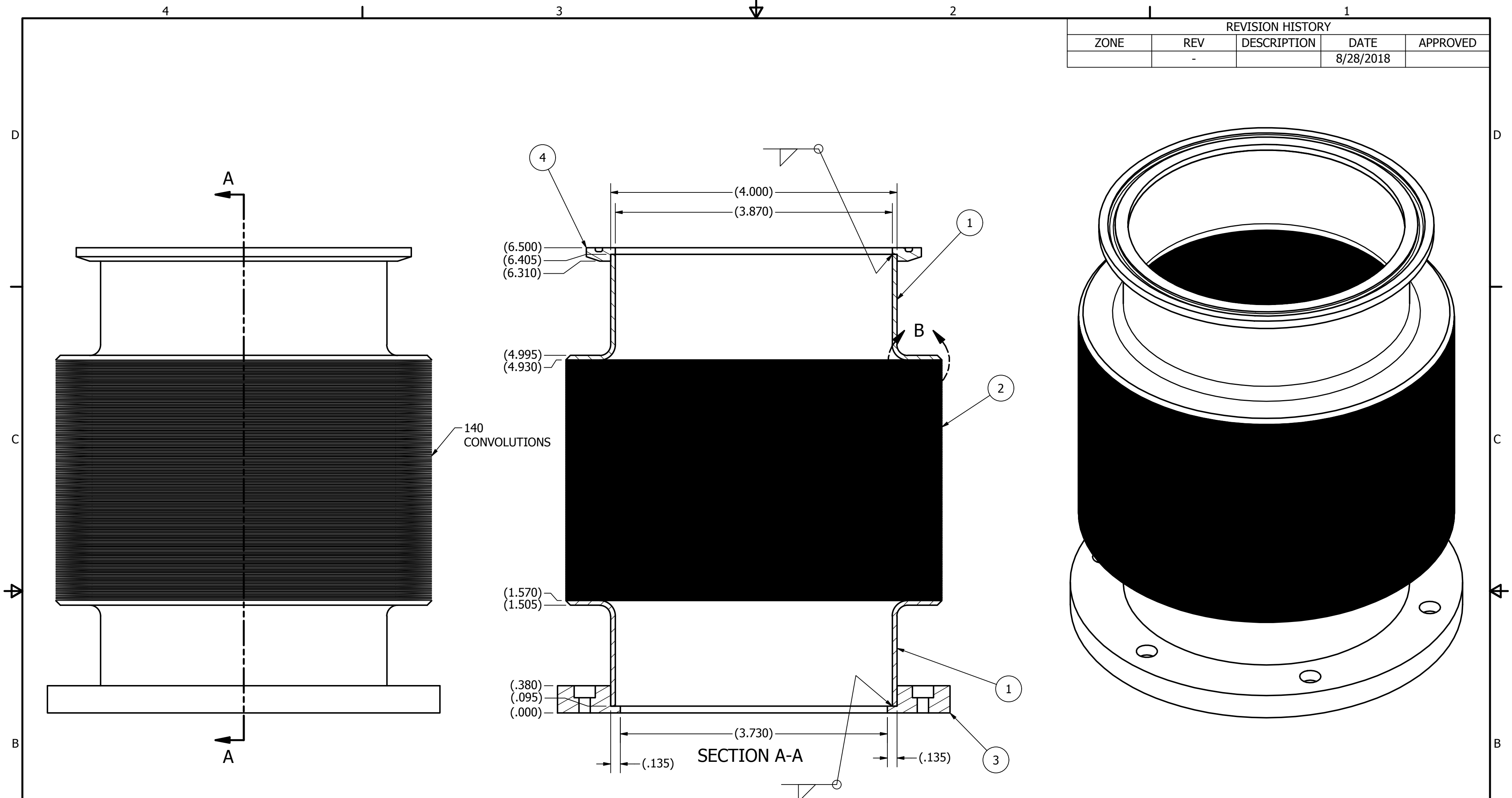


REVISION HISTORY				
ZONE	REV	DESCRIPTION	DATE	APPROVED
	-		8/28/2018	



PARTS LIST			
ITEM	QTY	PART NUMBER	DESCRIPTION
1	2	Key High - Defined	Bellows A-Style Adapter
2	1	Key High - Defined	Bellows 140 Convolutions Assy
3	1	MDT-017990-0300-01	E1039 PPT Bellows Lower Flange Detail
4	1	MDT-017990-0300-02	E1039 PPT Bellows Upper Flange Detail

DRAWN S. Cannon	8/28/2018	NMSU Physical Science Laboratory	
CHECKED		TITLE	
QA		E1039 PPT Bellows Assembly - Collapsed	
MFG			
APPROVED			
SIZE C	DWG NO SAS-017990-0300	REV -	
SCALE 1 : 1	SHEET 1 OF 1		

Notes:  
All materials and assembly must be non-magnetic (i.e., 316L CRES)  
Key High Vacuum Products, Inc. part number DB-1426